

S.W. 1/4 OF S.W. 1/4 OF

85

SECTION 10, T.6N., R.1W., S.1B.8M.

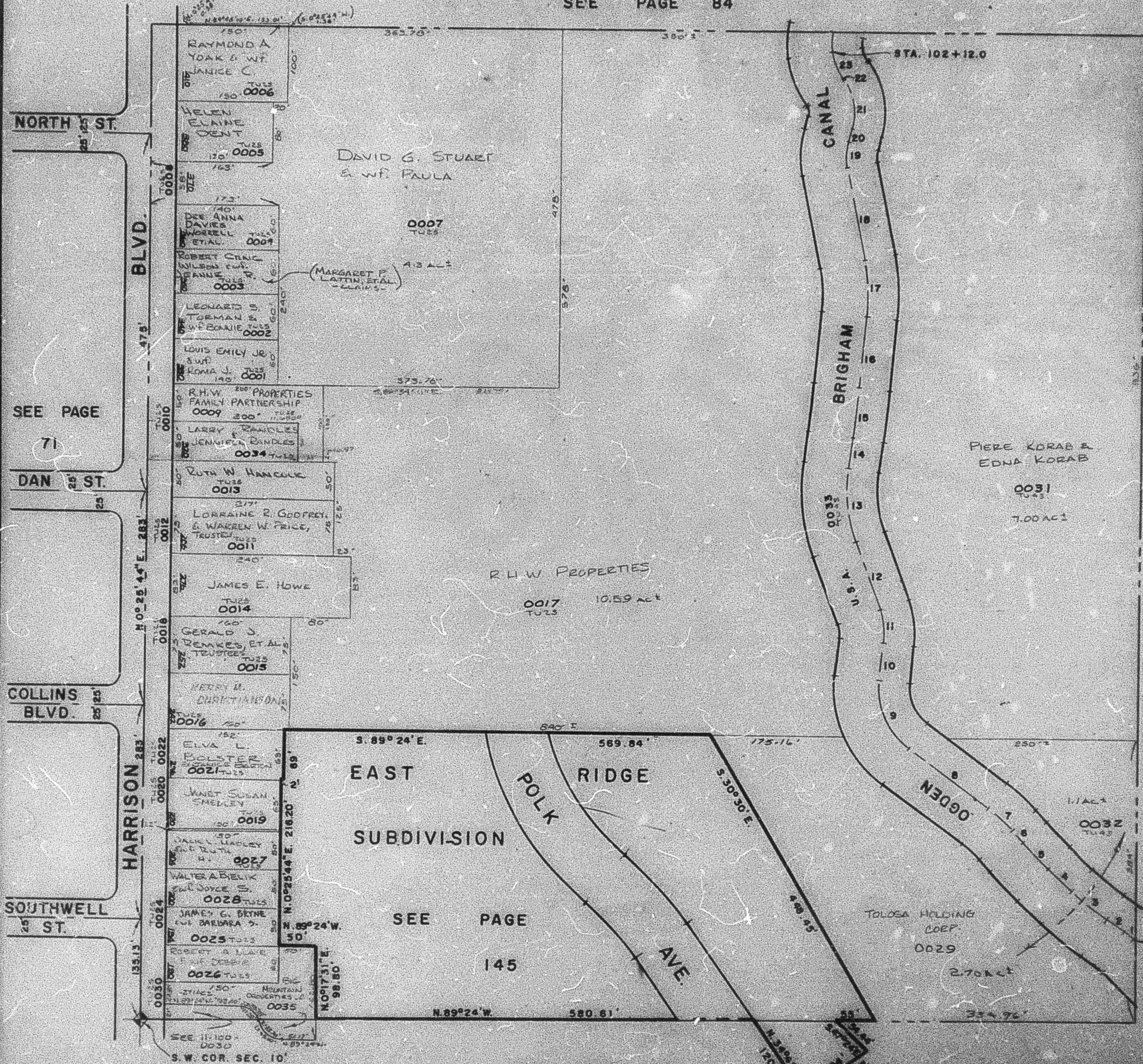
TAXING UNIT 25, 43

IN OGDEN CITY

PREFIX 11-085

SCALE 1" = 100'

SEE PAGE 84



C DATA

- 1-R-100' L-118.5'
- 2-N-54°52'30"W L-288'
- 3-R-100' L-288.5'
- 4-N-88°51'W L-48.7'
- 5-R-200' L-48.8'
- 6-N-41°06'W L-21.2'
- 7-R-200' L-48.4'
- 8-N-25°54'W L-132.7'
- 9-R-100' L-104.1'
- 10-N-8°00'E L-48.5'
- 11-R-100' L-27.7'
- 12-N-19°45'30"W L-44.8'
- 13-R-200' L-47.3'
- 14-N-8°10'30"E L-40.1'
- 15-R-2000' L-48.9'
- 16-N-8°11'E L-48.4'
- 17-R-250' L-17.2'
- 18-N-10°15'30"W L-125.2'
- 19-R-75' L-37.7'
- 20-N-18°25'30"E L-3.4'
- 21-R-75' L-46.3'
- 22-N-58°07'50"W L-10'
- 23-R-75' L-36.4'

SEE PAGE 84

SEE PAGE 127

SEE PAGE 100

W.F. 10-70'